

1- Splash screen



2- Data list

Pacific Tek - Valve Data Logger - Developed by SpatialWave

New Export Save Clear Exit Configure Support Pacific Tek

Drag a column header here to group by that column

Valve ID	Position	Turns	Torque	Date	Start	End	
----------	----------	-------	--------	------	-------	-----	--

3- Add data - Required fields

Pacific Tek - Valve Dialog - Developed by SpatialWave

Required

VTM Type: PT13

Valve ID
1000

Optional

Current Position
Open

Turn Direction
Clockwise

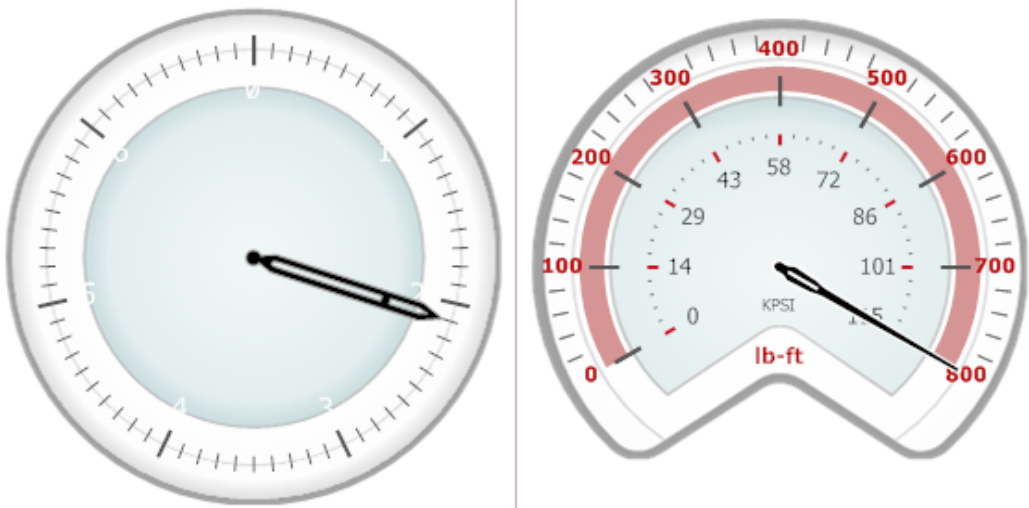
Turns Max
0.3 0.3

Torque (lb-ft) Max
996 996

Date
11/23/2010

Start Time
10:13:32 AM

End Time
12:00:00 AM



Turns	0.3	Torque	996
Max Turns	0.3	Max Torque	996

Pacific Tek™

Stop Save Cancel

4- Add data - Option fields

Pacific Tek - Valve Dialog - Developed by SpatialWave

Required

VTM Tpye: PT13

Depth

Custom one

Optional

Condition of the Valve Nut

Condition of the Valve Box

Custom two

Custom three

Custom four

Custom five


Street Name

Type

Cross Street Name

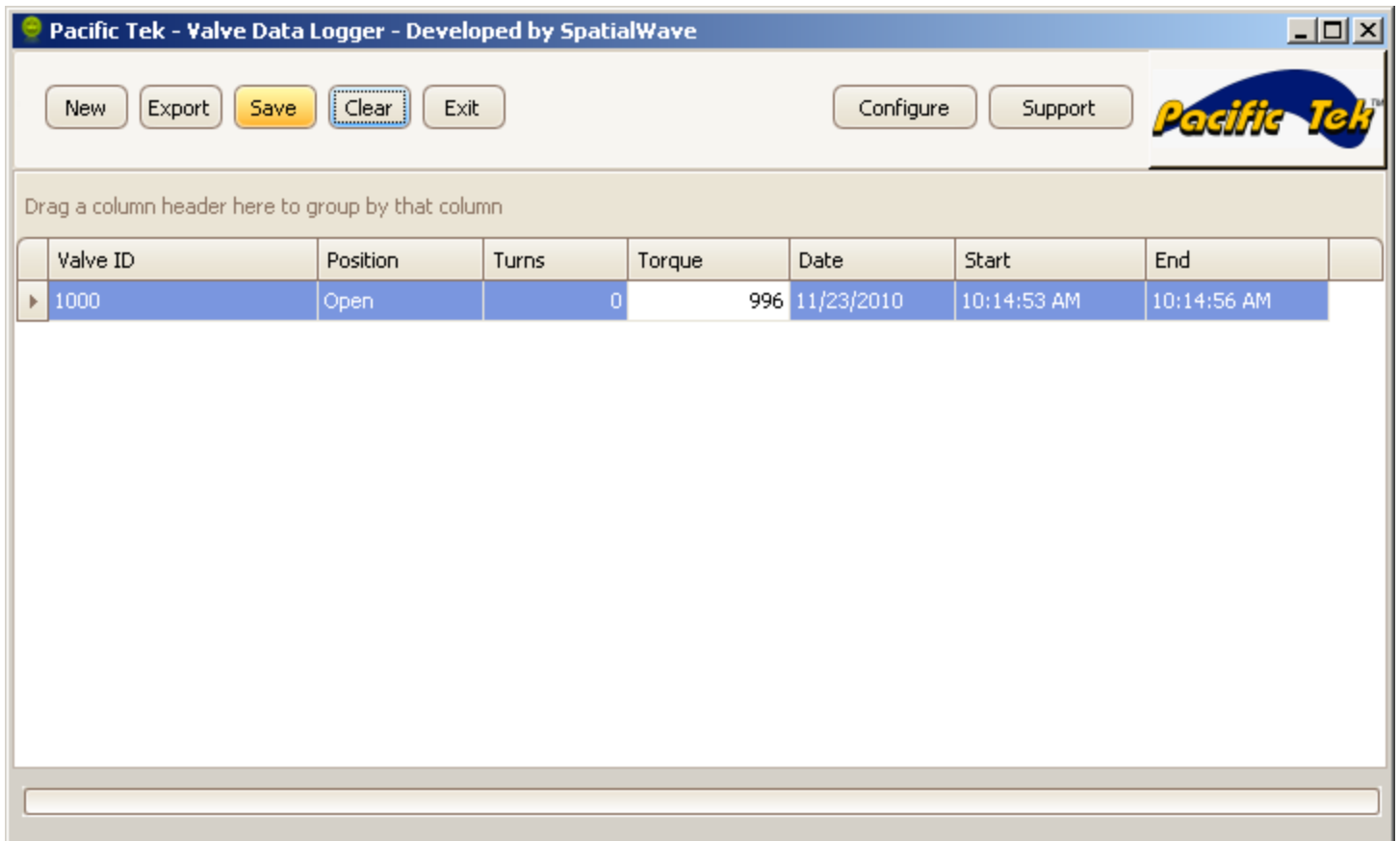
Map Number

Comments

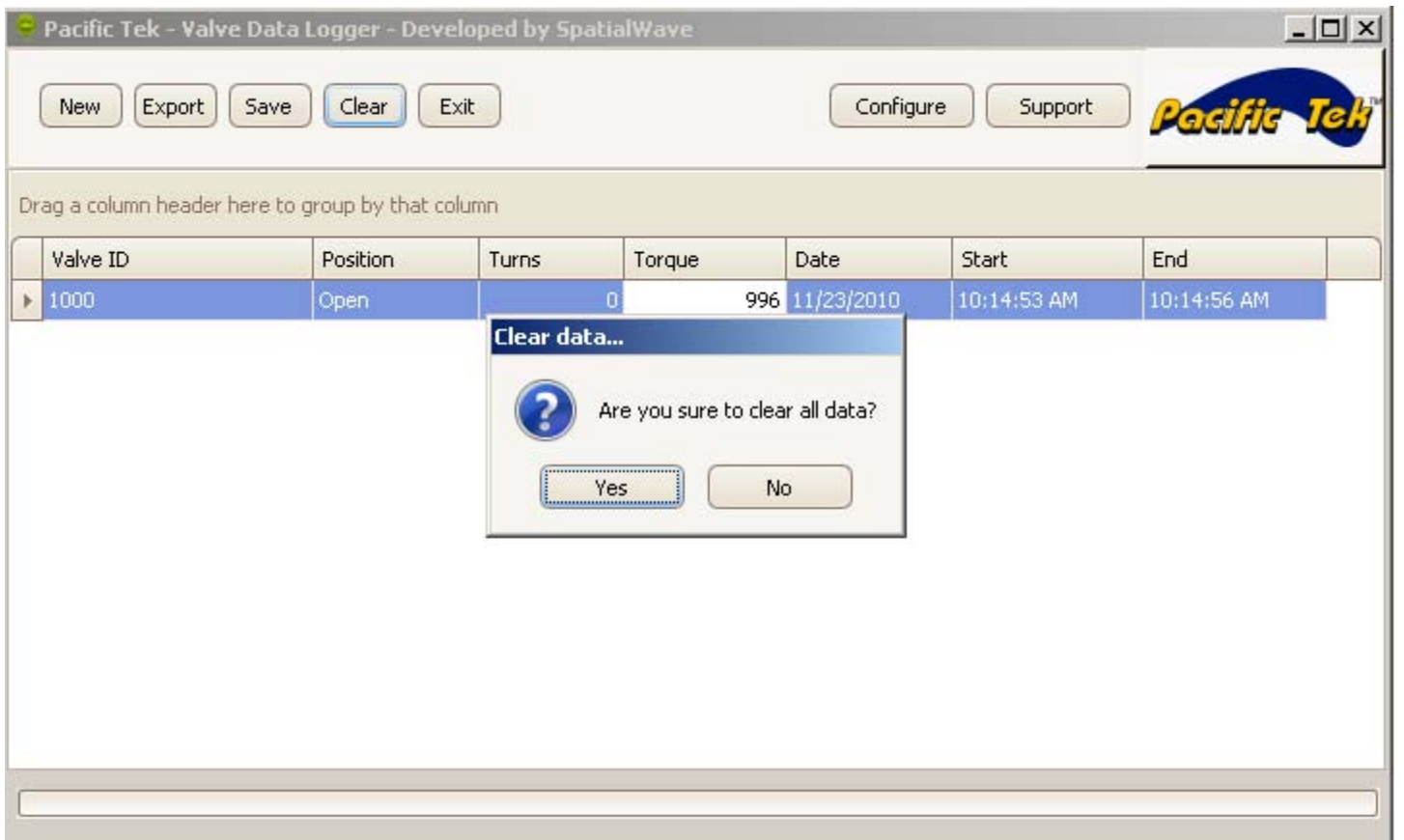
 Stop Save Cancel

The image shows a software dialog box titled "Pacific Tek - Valve Dialog - Developed by SpatialWave". It features a sidebar on the left with "Required" and "Optional" sections. The main area contains several input fields and radio button groups. The "Required" section includes a red label "VTM Tpye: PT13", a "Depth" text box, and five "Custom" text boxes labeled "Custom one" through "Custom five". The "Optional" section includes two radio button groups for "Condition of the Valve Nut" and "Condition of the Valve Box", each with options "OK", "Fair", "Poor", and "Need to be replaced". Below these are text boxes for "Street Name", "Type", "Cross Street Name", and "Map Number". At the bottom left is a "Comments" text area with a vertical scrollbar. At the bottom right are three buttons: "Stop", "Save", and "Cancel". The Pacific Tek logo is located at the bottom left of the dialog box.

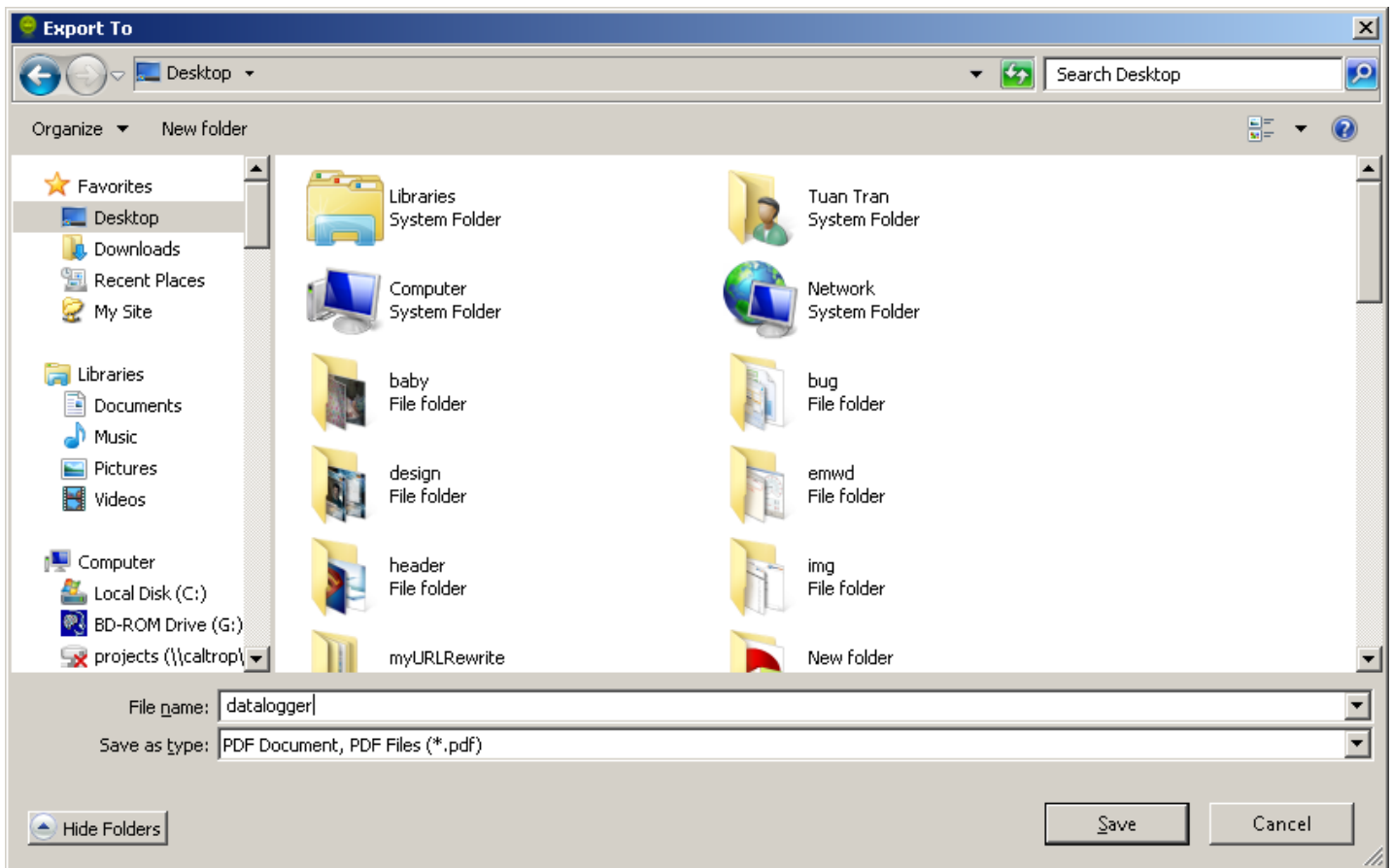
5- Edit data from main list and save



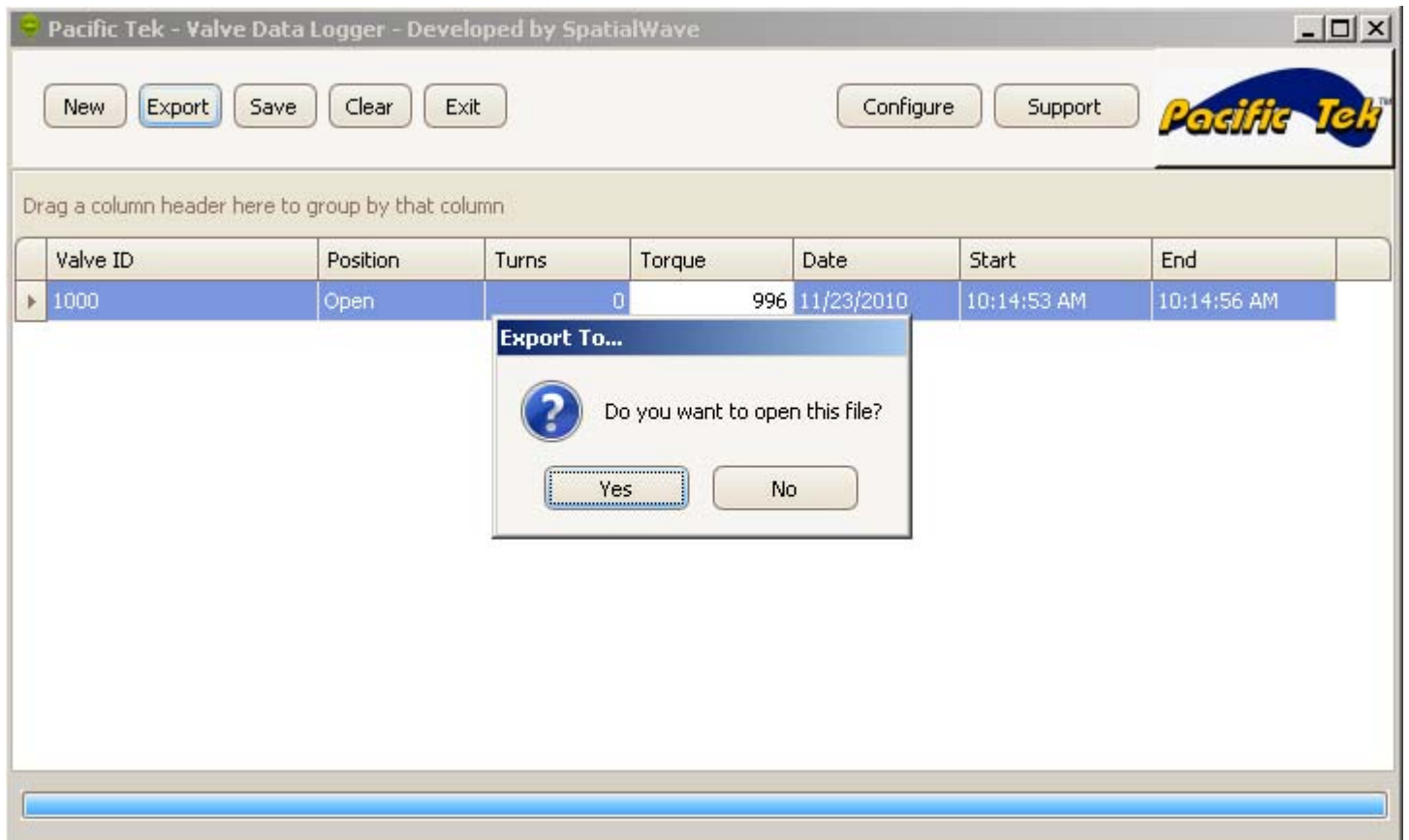
6- Clear all data from the list



7- Export the list to file (PDF, XLS, HTML, XML, CSV, ...)



8- Progress bar and export result dialog.



9- Calibrate and Configure Data Logger parameter

Pacific Tek - Valve Dialog - Developed by SpatialWave

VTM Tpye: PT13

Stop

Turns 00

Torque 408

Enter Digital Read

Turns 1 Torque (lb-ft) Add Sample Sample Size 1

Time	Turns	Raw Turns	Torque	Min Raw Torque	Med Raw Torque	Max Raw Torque
10:17:33 AM	1	4	996	3026	3026	3026
10:17:49 AM	1	4	408	2580	2580	2580

Record 1 of 2

Save Calibrate Clear All

Result

Gear Count 10 Torque Scale Factor 1.318386 Minimum 1.318386 Medium 1.318386 Maximum 1.318386

Milliseconds Delay 0 Pressure Offset 2271 2271 2271

Save Configure